

INDEPENDENT SCHOOLS

# SKI & SNOWBOARD

CHAMPIONSHIPS 2016

**14-20 DECEMBER 2016**

LES DEUX ALPES **FRANCE**



---

# INTRODUCTION

---

We are thrilled to announce the event is gathering a huge amount of momentum, and 2016 is set to continue the trend with more competitors across the board and a larger junior division.

In order to capacitate the growing numbers, and make sure that we can still maintain the flexible and friendly nature of the competition we have extended the programme to allow three days to complete the competition. With this we will be able to increase the parallel slalom which is the most popular event year on year.

Renowned as one of the leading coeducational trips in the UK, the Championship aims to nurture the spirits of both competitive racers and holiday skiers and boarders for an incredible six days of early season mountain fun.

Boasting an inclusive package to fully immerse students in the social nature of winter sports, the Championship offers three days of training, two days of friendly competitive skiing for both individual and team awards, as well as a Gala Prize Giving Ceremony.

Join us in 2016 and let's make it a year to remember!  
See you on the slopes!



A handwritten signature in blue ink that reads "Linley Lewis".

**Linley Lewis**  
Basecamp and Event Director



---

# EVENT OVERVIEW

---



## WHERE

Held in Les Deux Alpes, the principal resort of the French Dauphine region and offering fantastic snow conditions with one of the largest glaciers in Europe (3568m). The resort scales up to 3600 metres with the option to race at three stades, conditions dependent.



## WHEN

WEDNESDAY 14 DECEMBER -  
TUESDAY 20 DECEMBER 2016

---



## WHAT

The Championship is a fantastic opportunity for schools to offer pupils a hassle-free training camp abroad or a more relaxed ski holiday amongst their peers from other independent schools across the UK. Held annually in December, it's also a great way to provide some early season racing for any keen racers, and a positive introduction to racing, and indeed the winter sport to beginners.

The Championship runs for six nights and five days, with three full days of ski race training, two days of competing, and closes with a delicious gala supper and prize giving ceremony.

We are able to be flexible to schools requirements if you want to come out earlier, and make the most of the trip to the mountains.

# OVERVIEW OF THE WEEK

For those on the full package the below gives a snapshot of the event. If you want to come out for shorter (or longer), just speak with us, and a full range of options are available on our Packages page.

FLY TO RESORT — 	SKI TRAINING — 	SKI TRAINING — 	GIANT SLALOM — 	INDIVIDUAL SLALOM — 	PARALLEL SLALOM — 	FLY HOME — 
WEDNESDAY <b>14</b> DECEMBER	THURSDAY <b>15</b> DECEMBER	FRIDAY <b>16</b> DECEMBER	SATURDAY <b>17</b> DECEMBER	SUNDAY <b>18</b> DECEMBER	MONDAY <b>19</b> DECEMBER	TUESDAY <b>20</b> DECEMBER



## WHO

The 2015 Championship saw 15 teams a range of UK independent schools, and British Middle Eastern School vying for the top event positions and we are expecting to welcome even more participants than ever before this December. If you would like a list of competitors, just ask us.

---



## EVENT MANAGEMENT

The Championship is managed by Basecamp, the leading provider of Ski and Snowboard Courses in Val d'Isere, Meribel, Banff and New Zealand. Coming into its fourteenth season of operation, Basecamp has the experience, know-how and contacts to provide excellent pre-departure support, relevant risk assessments and mixed staff to ensure an enjoyable trip for both teachers and pupils. We are ABTA members, and hold an ATOL license.



## COMPETITION

Seniors and Juniors Giant Slalom, and Slalom, with team and individual prizes up for grabs (individuals recognised to U9, U11, U13, U16 and Open).

Seniors and Juniors Parallel Team Slalom

---



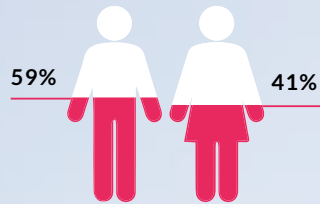
## RACE MANAGEMENT

The race days run to FIS standards, and are managed by a British and French team of experienced race staff.

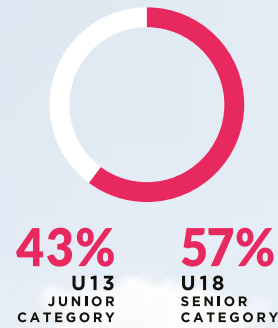
---

# 2015 EVENT STATISTICS

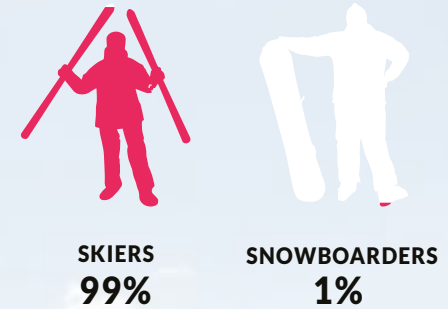
## GENDER



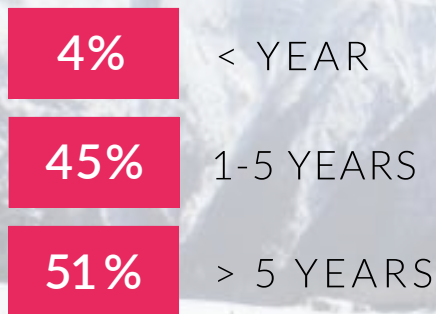
## AGE



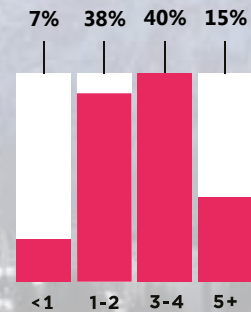
## DISCIPLINE



## YEARS SKIING

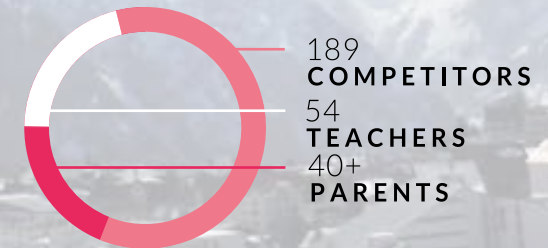


## WEEKS SPENT SKIING A YEAR



AVERAGE WEEKS OF SKIING A YEAR PER COMPETITOR

## WHO ATTENDED



# SKI & SNOWBOARD PROGRAMME



*The Ski & Snowboard Programme is tailor made and designed to cater for a wide range of abilities. Instructors are carefully hand-picked for the four days to provide encouraging and inspirational training sessions to challenge both advanced skiers and welcome those new to the sport. As pupils are taught in groups of no more than eight and organised by ability, as well as by school, a fun, inclusive skiing environment is maintained.*

The 2016 programme will see specialist performance development, race coaching sessions and gate training. The instructors use various learning tools, including games and exercises to make lessons exciting and entertaining.

## SKI INSTRUCTORS

An experienced selection of ESF instructors are hand picked each year to provide the tuition prior to the competition. Having been a key part of the event since its inception these instructors are able to put the training into context of the event, and provide fun days skiing with a race focus. The pupils will not solely be skiing gates, as we believe all mountain warm up is of paramount importance, but they will train in gates prior to the events.



A specialised UK race training ski school, we have partnered with Impulse for those looking for more race specific training. Contact us for more information, and whether the Impulse training would be suitable for your school or group.

## PREVIOUS SKI RACING EXPERIENCE

Ski Racing experience is NOT required but pupils should be comfortable skiing on red runs.

## SAFETY

Trip safety is at the forefront of our operations and we are more than happy to provide all supporting documentation and risk assessments to meet school requirements.



# 🏆 PRIZE CATEGORIES

## 1 GIANT SLALOM

Open Senior Boys, and Girls (U18 & below) and Open Juniors Boys and Girls (U13 & below).

Boys and Girls individual prizes for age categories U18, U16, U13, U11, and U9 - 1st, 2nd, 3rd

### TEAM:

Boys Senior Team - 1st, 2nd, 3rd  
 Girls Senior Team - 1st, 2nd, 3rd  
 Boys Junior Team - 1st, 2nd, 3rd  
 Girls Junior Team - 1st, 2nd, 3rd

## 2 SLALOM INDIVIDUAL

Open Senior Boys, and Girls (U18 & below) and Open Juniors Boys and Girls (U13 & below).

Boys and Girls individual prizes for age categories U18, U16, U13, U11, and U9 - 1st, 2nd, 3rd

### TEAM:

Boys Senior Team - 1st, 2nd, 3rd  
 Girls Senior Team - 1st, 2nd, 3rd  
 Boys Junior Team - 1st, 2nd, 3rd  
 Girls Junior Team - 1st, 2nd, 3rd

## 3 PARALLEL SLALOM

Open Team - 1st, 2nd  
 Plate - 1st, 2nd\*  
 Juniors - 1st, 2nd

\* Number dependent





## AGE CATEGORIES

**U18** — Born between 1st January 1998 & 31st December 1999

**U16** — Born between 1st January 2000 & 31st December 2002

**U13** — Born between 1st January 2003 & 31st December 2004

**U11** — Born between 1st January 2005 & 31st December 2006

**U9** — Born between 1st January 2007 & below

**SENIOR** — U18

**JUNIOR** — U13

## PRIZES

Team Cups and Individual Prizes are up for grabs and we will also recognise personal achievements from throughout the Championships during the Gala Dinner. We will have a huge selection of prizes from top industry brands.

## PRIZE GIVING

Due to the increased volume of prizes we will announce the winners off all categories at prize giving, but only the winners of the open disciplines and team events will come up to collect medals and prizes. The winners of the individual age categories will stand up to receive recognition, their medal will be passed collected by their teacher for distribution, and they are not guaranteed a prize.



# OFF SNOW PROGRAMME

*Each evening pupils can enjoy a packed apres-ski programme, including prize filled quiz nights, a presentation from a professional skier and a bowling night out.*

The event also coincides with the Rise Music festival, which holds an open evening in the centre of the resort, which makes for a great evening's entertainment (at the teachers discretion).

**Rise**  
Festival





# PHOTOS & VIDEOS

*The trials and tribulations off and on the slopes will be filmed and shown to pupils on a regular basis, and uploaded to our website to give friends and family back home a glimpse into their mountain experience.*

To check out last year's videos, photos and blogs, please visit:

[SCHOOLSKICHAMPIONSHIPS.COM](http://SCHOOLSKICHAMPIONSHIPS.COM)

---

# FLIGHTS & CARRIAGE

---



## FLIGHTS

Flights are included as standard, and we generally aim to to arrange flights from your nearest airport. We will have outbound flights from:

- London Gatwick
- London Luton
- Bristol
- Aberdeen

Once you confirm, we will release flight schedules around September.

If you are joining us from outside the UK we will simply deduct the cost of the flights from your package (see our packages page).



## CARRIAGE OR RENTAL

As part of the package we include ski carriage, or a full rental pack for your pupils (and teachers). Prior to your departure we will visit your school with a van, and collect all your teams ski gear which we will courier out to resort.

We will then return it after the event. If we are unable to visit your school, we will cover the airline carriage fees.



# LES DEUX ALPES

 FRANCE

 **EDINS MTS**  
DAUPHINE, FRANCE

**10**  
HECTARE PIPE

 **220** KM  
GROOMED RUNS

  
**HIGHEST PEAK**  
**3600**M

  
**ANNUAL SNOWFALL**  
**750**CM

**69** **9** GONDOLAS  
**LIFTS** **23** CHAIR LIFTS  
**37** SURFACE LIFTS

 **VILLAGE HEIGHT**  
**1650**M



### SKI AREA

Les Deux Alpes is a vibrant resort town set against a backdrop of mountain pastures and high alpine peaks, with one of the largest glaciers in Europe. As France's second oldest ski resort and the main resort of the French Dauphine region, Les Deux Alpes can confidently cater to all abilities with its gentle nursery slopes, wide range of ski schools, powder-filled off-pistes and challenging red runs.

The resort is also extremely snowsure and even hosts summer and autumn camps on the glacier for skiers and snowboarders. Thanks to its three separate race stades at different heights, the Championship will always be run on the best possible mountain conditions and easily inspire a new generation of snow sport lovers. Add in an ultra efficient lift system, a new boarder X circuit and a world-class snowpark and it's easy to see why Les Deux Alpes is enduringly popular both with domestic and foreign visitors.



### THE TOWN

Les Deux Alpes refers not to the two mountains but to the villages of Venosx and Mont de Lan, located at its southern and northern tips. Originally quiet pastoral communities frequented by sheep and goat farmers, Les Deux Alpes is now one of France's premier resorts and set to become one of the most exciting destinations in Europe. By 2018, an 18-pylon gondola will link Les Deux Alpes with neighbouring Alpe d'Huez to create an incredible three-resort area with La Grave, boasting not one, but three glaciers.

Whether you're stopping off at the local chocolaterie, enjoying a spot of snowshoeing, mountain biking or shopping in one of the many equipment stores lining its two main streets, Les Deux Alpes is an impressive winter and summer playground.



# ACCOMMODATION

*Schools are centrally accommodated in a selection of hotels in close proximity in the centre of Les Deux Alpes. The 3\* Belle Etoile Hotel, the neighbouring Hotel des Neiges, and the nearby Hotel Les Clarines. As well as local apartments with hotel management, with all meals centralised at the hotels.*

Depending on demand we may also use the services of an additional neighbouring hotel, but this will be confirmed by us at your time of booking.

## HOTEL LA BELLE ETOILE

This charming hotel is under Italian management and is the perfect hotel for school trips. Enrica and her team are some of the most welcoming hosts we've ever met and they serve delicious meals to boot. Each bedroom contains a TV, storage space and a private bathroom. While the hotel itself boasts a reading room, meeting room, bar, pool table, solarium terrace, fitness room, and a jacuzzi (for staff only).

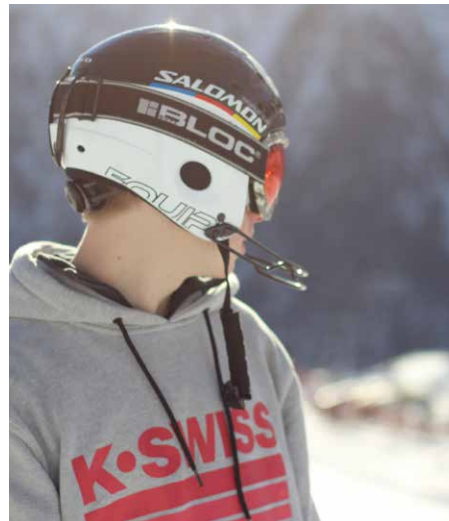
## HOTEL DES NEIGES

Hotel Des Neiges is directly next door to the Belle Etoile and is run by Alain Ksas, a local of Les Deux Alpes with hotels both there and in Les Orres. Des Neiges offers the same range of facilities as the Etoile with comfortable en-suite bedrooms, a games room, and a bar.

## HOTEL LES CLARINES

Situated a 3 minute walk about Hotel Belle Etoile the hotel boasts some of the finest views and sun rises you can expect from ski lodgings! The hotel has a games room, reading room, bar and ski locker. All evening meals from here are centrally managed at Hotel Belle Etoile.





## FOOD

A continental daily buffet breakfast is provided including meats, cheeses, freshly baked croissants, bread and a selection of cereals. A daily packed lunch is provided and eaten on the slopes under the supervision of your instructors.

Each evening a minimum of three courses will be served. This a fantastic opportunity for students to enjoy a well balanced diet, replenish their energy after a hard day's skiing and socialise with their peers in resort.



## RESORT STAFF

The Basecamp Team are there to support you from your initial enquiry, right up until your last pupil has passed through security gates back in the UK.

We have representatives on all flights, and have both male and female support staff in resort to ensure a smooth few days for both pupils and teachers.

The race itself is managed to all FIS requirements, and by an experienced team of qualified French staff to ensure that all safety elements are compliant with the highest standards.



## TRAVEL INSURANCE

Travel insurance is not included as part of the package, and is a pre-requisite for all competitors. If you'd like to add Carre Neige coverage to your ski pass, please do let us know.

MPI Brokers are an event sponsor, and provide an extremely thorough insurance options for schools.



# TESTIMONIALS

*Below is a snapshot of what other race organizers have said about the Championship. If you would like to be put in contact with other team organizers, please do let us know as we would be more than happy to do so.*

"I would strongly recommend the Championships to schools who are looking for an experience of racing in a friendly but competitive environment. We have come every year!"

**SUE DUKE - WYCOMBE ABBEY SCHOOL**

"We've been coming for over five years now and use it as an early season ski trip. We have a few strong skiers and it's a great opportunity for them to compete."

**RICHARD CROOK - ARDINGLY COLLEGE**

"For us the event is great as it gives our more experienced skiers a chance to compete, and allows the less experienced skiers to learn more while having fun!"

**BEN GREEN - WHITGIFT SCHOOL**

"We've been coming every year, it is a great way to start the season, and it is just really well run!"

**JON CHESWORTH - KINGS COLLEGE WIMBLEDON**



"We use the event as a great chance to get the season rolling. We have a handful of serious racers and it gets them charged up for the season!"

**FRED SIMKINS - HURST**

"Our kids thoroughly enjoyed themselves and I certainly hope that Bradfield will be back next year. It was an enjoyable experience from our point of view and we really appreciated both the considerable effort that the Basecamp and hotel staff put into the event and the friendly welcome we received from you all."

**MATT RIGBY - BRADFIELD COLLEGE**

"We thoroughly enjoyed the event and everyone's company. I think it was a unique experience for all of us; we haven't been on tours or EC visits where we really got to know staff

from other schools, and our pupils got to mix with other pupils before. We all felt like we were welcomed into the fold and given help and advice at every turn. I think once we tell everyone back here how it went (and how well organised it was), and the other kids see the video footage (especially at our Prep Schools) we will be able to attract plenty of interest for next year."

**SIMON NORRIS - LANCING COLLEGE**

I wanted to write to say a huge thank you for the brilliant trip in Les Deux Alpes. I was very impressed with organisation from start to finish and we really felt very well looked after. Your whole team were outstanding, and from being involved in various sports over the years, the ski racing was one of the most exciting events I have witnessed! I've also done a number of ski trips, and this one was by far the most relaxing and fun.

**GRAHAM BAILY - BLUNDELL'S SCHOOL**

# PRICING OPTIONS



All packages include flights & airport transfers.



Don't see what you're looking for, or want to tailor your package then contact us.

## LITE OPTION

### 5 NIGHTS

1 DAY COACHING  
3 DAYS COMPETING  
FULL BOARD ACCOMODATION  
SKI HIRE / CARRIAGE  
SKI PASS

£965

PP, Fully Inclusive

✈ FLIGHT OUT - 15TH  
✈ FLIGHT BACK - 20TH

TRAVELLING FROM OUTSIDE THE UK & NO FLIGHTS NEEDED?

£805

## FULL PACKAGE

### 6 NIGHTS

2 DAYS COACHING  
3 DAYS COMPETING  
FULL BOARD ACCOMODATION  
SKI HIRE / CARRIAGE  
SKI PASS

£1075

PP, Fully Inclusive

✈ FLIGHT OUT - 14TH  
✈ FLIGHT BACK - 20TH

TRAVELLING FROM OUTSIDE THE UK & NO FLIGHTS NEEDED?

£915

## TAILORED

### NO COACHING (ENTRY FEES INCLUDED)

3 DAYS COMPETING  
FULL BOARD ACCOMODATION  
SKI HIRE / CARRIAGE  
SKI PASS

### 7 NIGHTS

✈ - 13TH FLIGHT OUT **£1035** 20TH - ✈ FLIGHT BACK

### 6 NIGHTS

✈ - 14TH FLIGHT OUT **£975** 20TH - ✈ FLIGHT BACK

### 5 NIGHTS

✈ - 15TH FLIGHT OUT **£915** 20TH - ✈ FLIGHT BACK



## RACE ONLY OPTIONS

We prefer all our schools to be on our full programme as it adds to the festival nature of the event but if you're keen to organise your own arrangements and get involved racing contact us!



## BOLT ON

You can receive training from Impulse, A UK specialised race ski school for only £45 per person per day.

---

# PACKAGE DETAILS

---

*We offer a range of options to suit each school, but the below acts as a strong guideline on what we include as part of the package:*

## WHAT'S INCLUDED

### Pre-Departure Support:

- >> Support including a personal visit from a Basecamp advisor if required
- >> Presentation to help generate interest for the trip
- >> Marketing & promotional literature
- >> E-mail and phone support from your Basecamp trip co-ordinator
- >> Guidance on Risk Assessments

### Trip Inclusions:

- >> Return flights from the UK
- >> Return overseas transfers
- >> 2 (package dependant) days of training (6 hrs per day, maximum of 8 per group)
- >> 3 days of professionally organised races
- >> Ski Hire (or return ski carriage from your school)
- >> 5 days full area lift pass
- >> 6 nights full board accommodation in multi-bed rooms (breakfast, lunch, supper all included)
- >> Prize Giving Ceremony

- >> Apres-ski & evening entertainment (see Overview for more detail)
  - >> In-resort support service
  - >> Event Hoody
  - >> Photos and videos of the week
- 

## PARTY LEADER BENEFITS

Free for Party Leaders (1 free place per 8 full paying passengers and includes teachers sharing at 2-3 per room. Single supplement available and subject to availability).

---

## WHAT'S EXTRA AND NOT INCLUDED?

- >> Pupils should have lunch money for Wednesday 14th December
  - >> Travel Insurance
  - >> Pupils will need to bring a "day-pack" for their packed lunches
- 

## ADDITIONAL TEACHERS OR SITE INSPECTIONS

Teachers over and above the complimentary 8:1 ratio will be charged £595pp or a pro-rata to the amount of pupils short of the complimentary quote (whichever is cheaper.) Any schools wishing to join on a site inspection for future years are welcome, at the same rate.





---

# PARENTS

---

*Basecamp are more than happy to welcome parents, so that they can support their children throughout the event, at the competing school's discretion.*

We are able to put together tailored packages for parents, at a range of hotels in Les Deux Alpes.

We generally recommend staying at Chalet Mounier, as it is widely regarded as the best hotel in the resort. But there are a handful of other options.

We can then provide you with a full itinerary to make sure you don't miss the action.

---

*To see if we can help your visit contact us.*



**An example parent package could look as follows:**

- >> Return flights from the UK
- >> Return overseas transfers
- >> 4 days full area lift pass
- >> 5 nights half board accommodation at the 4\* Chalet Mounier
- >> Invitation to the Prize Giving Ceremony



# PRE-EVENT TIMETABLE

The below serves as a good guideline for all schools and parents:

## EASTER TERM

- » Basecamp to send out invitations to schools
- » School's provisional booking deposits paid by the end of term

## SUMMER TERM

- » Basecamp to meet Party Leader and give a presentation to pupils before half-term if required.
- » Schools to confirm initial numbers and make provisional booking deposits by end of term
- » Basecamp to make provisional bookings and conduct provisional Risk Assessment

## SUMMER HOLIDAYS

- » Basecamp to confirm final numbers and confirm schedule of events
- » Basecamp to conduct thorough Risk Assessment and implement Safety Management System

## AUTUMN TERM

- » Schools to confirm any changes to booking numbers by end of September
- » Basecamp to process final information packs including allocating accommodation, rental information, flight bookings etc by half term
- » Basecamp to liaise with schools and provide support up to the start of the event

## PAYMENT SCHEDULE

*Can be flexible, and varies between each school, but the following acts as a good guideline (on a full package example)*

N.B. All payments should come from the schools directly, not the parents individually

### 1ST DEPOSIT - CONFIRM BOOKING

» £300<sub>pp</sub>

End of Easter Term /  
Half Term - Summer term

### 2ND INSTALMENT

» £425<sub>pp</sub>

End of Summer Term  
(1st September 2015 if not possible)

### FINAL INSTALMENT

» £350<sub>pp</sub>

1st September  
(1st October 2015 if not possible)



# FURTHER DETAILS

# WEEKLY ITINERARY

The below acts as a detailed guideline for anyone on the full package. If you take the "Lite" option, then it will be as below, but with arrival on Thursday.

## DAY 1 - WEDNESDAY 14 DEC

10:45-14:00

Land at Geneva Airport

14:30-1900

Arrival in resort, and check in

15:30

Equipment / ski group fittings at our partner pro shop (for early arrivals)

18:30 onwards

Supper

20:30

Movies / early night (Feel free to bring DVD's)

## DAY 2 - THURSDAY 15 DEC

07:30

Breakfast - Pick up packed lunch

08:30

Equipment / ski fit for later arrivals

09:00

Gathering in front of hotel ready to ski. Ski & board level group dispatch, ski pass hand out.

09:15

Meet your group instructors, and get on your skis/boards.

15:30

Back to the hotel, free time.

17:00

Captain's meeting

18:00 onwards

Supper

20:30

Quiz/Talk/Bowling (TBC)

22:00

Beauty sleep

## DAY 3 - FRIDAY 16 DEC

07:30

Breakfast - Pick up packed picnic lunch.

09:15

Meet the instructors in the pre-organised groups, and get on your skis/boards.

15:30

Back to the hotel, free time.

17:00

Race meeting in dining room, followed by captain's meeting.

18:00

Supper

19:30

Rise Festival Open Evening

20:30

Quiz/Talk/Bowling (TBC)

21:30

Beauty sleep

## DAY 4 - SATURDAY 15 DEC - GIANT SLALOM

07:30

Breakfast - Pick up packed picnic lunch

09:00

Meet outside hotel ready to race. Supervised by party leader & Basecamp staff, go to racing venue. Warm up led by team captains

09:45-10:00

Course check and warm up

10:30

Start of Seniors and Juniors Giant Slalom leg one

13:00

Giant slalom leg two

14:30-16:30

Party leader handover groups to instructor for afternoon training

16:45

Back to the hotel for free time.

17:00

Captain's meeting - Slalom briefing

18:00

Supper

20:00

Quiz/Talk/Bowling (TBC)

21:30

Beauty sleep

## DAY 5 - TUESDAY 16 DEC - SLALOM

07:30

Breakfast - Pick up packed picnic lunch

09:00

Meet outside hotel ready to race. Supervised by Party leader, go to racing venue. Warm up led by racing team captains

09:45-10:00

Course check and warm up

10:30

Start of Seniors and Juniors Slalom leg one

13:00

Slalom leg two

14:30-16:30

Party leader handover groups to instructor for afternoon training

16:45

Back to the hotel for free time.

17:00

Captain's meeting - Parallel team race draw

18:00

Supper

20:00

Quiz/Talk/Bowling (TBC)

21:30

Beauty sleep

## DAY 6 - TUESDAY 15 DEC - TEAM PARALLEL SLALOM SHOWDOWN

07:30

Breakfast - Pick up packed picnic lunch

09:00

Meet outside hotel ready to race. Supervised by Party leader, go to racing venue. Warm up led by racing by team captains

09:45-10:00

Course check and warm up

10:30

Start of the Parallel Slalom

14:00-16:30

Parallel Slalom Finals

16:30

End of race, drop equipment to store before returning to hotel. Start packing and get ready for the evening

19:30

Buffet dinner, prize giving and party

## DAY 7 - WEDNESDAY 16 DEC

08:30

Breakfast. Room cleaning/tidying and packing. Please bring luggage for storage in garage by 10:30am

10:00

Check out time and room check

06:00-14:00

Departure for Geneva airport to arrive for 15:30 latest

14:00 onwards

Flight departure

---

# RACE CONDITIONS

# RACE RULES

---

## GENERAL

The detailed rules for ski racing are complex and not easy to follow especially for novice competitors. Team Captains should know the rules and would find it helpful to read the Federation International du Ski - International Competition Rules. These rules can be found at [GBski.com](http://GBski.com).

## TEAM CAPTAINS

Team Captains MUST attend the Team Captains brief, held each evening in the hotel, in order to receive a briefing from the Race Officials, participate in the race draw and provide the race order for their team(s). They are responsible for ensuring that their team(s) are properly briefed regarding the simplified rules set out below and to ensure that their team(s) know the timings for the race (e.g. course inspection, race start time etc.).

## TEAM SELECTION

Teams, in racer starting order, MUST be submitted after the FIRST day of training. There are no circumstances in which the teams can be changed after this, in the event of an injured rider in training the team will have to race with 1 less.

## TEAM SIZES

**Giant Slalom and Slalom** - Minimum of 6 in a team, with the 4 fastest times counting.

**Parallel Slalom** - Likely to be 6 in a team however final numbers per team will be confirmed at meeting, as it may be suitable to have 5 in a team to ensure an even split of racers, and allow each competitor to race in a team.

## JUNIORS

Any racers born in 2003 will automatically be entered into the Junior Division.

## BIBS

Bib numbers are allocated to competitors as a result of the draw which takes place at the Team Captain's meeting. They must be worn by all competitors during the race (and when inspecting the course) and must not be exchanged with another competitor. Bibs will be given to competitors by their Team Captains, in the finish or start area or as decided at the Team Captain's meeting.

## PERSONAL EQUIPMENT

Competitors must be correctly attired at the start by wearing full clothing (shorts, short sleeves, sunglasses, IPOD/Walkman, rucksacks etc. will not be allowed). Ski goggles MUST be worn, if spectacles have to be worn, goggles MUST be worn on top. Competitors MUST wear a helmet designed for ski racing and skis fitted with brakes (ankle straps are NOT acceptable).







### STARTING ORDER

The start order drawn as an "Individual Racing Draw". There will be no seeding to the racers. The order will be reversed in the second run. There will be no adjustment to the order dependent on first run times.

We adopt a "fencing pools system" where everyone races everyone in their pool. This will generate a pool order, with the top teams going through into the knockout. The bottom teams will then go through to a "plate" if we have the capacity. If the result of the pool race was a draw, a ski off will be conducted. If more than two teams have equal points, a round robin will be conducted.

### COURSE INSPECTIONS

The time of course inspections will be announced together with the mode of inspection. The mode of inspection must be adhered to by competitors, infringements will attract an official warning and repeated breaches may result in disqualification. Course inspection is strongly recommended! Shadowing any part of the course is not permitted and, if in any doubt, ask one of the Race Officials. Skiers must "slide" the course, and not ski it at full pace.

### THE START

Competitors must arrive at the start in plenty of time and will be called forward by bib number. Competitors arriving at the start too late to start in their race order will normally be allowed a provisional run and the Race Officials will decide whether the run will count on completion of the race. When the competitor is positioned in the start gate, the Start Referee will call 10 seconds, then 5, 4, 3, 2, 1, and Go. The competitor must start within the 10 second period between the 5 seconds announcement and 5 seconds after the Go, or be disqualified. This sequence applies to the Giant Slalom only, for the Slalom the Start Referee will ask the competitor "Ready" then order "Go". The competitor must start within 10 seconds of this order. Although the above describes how the start should be conducted, competitors must be briefed to follow the instructions of the Starter. For the Parallel Slalom, the No.1 competitors in each team will start after a "3, 2, 1, Go" and each subsequent competitor with the dropping of a flag at the finish on their side of the course.

### GATES

For the Parallel Slalom (PS) two virtually identical courses will be set and gates will consist of a single pole, red for one course and blue for the other. Teams will be drawn to compete on each course. Juniors will race on "stubby" gates.

### PASSING OF GATES

Gates are formed by at least two poles with an imaginary line between them. The competitor passes the gate correctly when both ski tips AND both feet have passed over the imaginary line. If a competitor loses a ski without fault (e.g. without straddling a gate) s/he may continue on one ski. If a gate is not passed correctly, a competitor may go back up the hill to pass the gate correctly (in either direction). Groups of gates have a Gate Judge and, if in doubt, the competitor should ask whether the gate was passed correctly. The Gate Judge will reply with "Go on" or "Go back up" or words to that effect. If a competitor misses a gate s/he no longer has the right to continue down the course and must either go back to the missed gate or ski out of the course. In the GS and SL, a competitor abandoning the course must descend via the side of the course AND NOT SKI THROUGH THE FINISH. For the Parallel Slalom, abandoning the course should not be an option as 1 point is awarded to a team that finishes second but was not disqualified.



### ASSISTANCE TO COMPETITORS

Competitors must not be assisted by anyone whilst negotiating the course. In Alpine racing, a competitor is normally subject to immediate disqualification should this occur. For the Independent Schools Championships the Race Officials will be flexible, particularly if the assistance is from one of the ESF gatekeepers or course maintainers.

### THE FINISH

The finish must be crossed on both skis, on one ski or with no skis in the case of a fall within the finish area (i.e. between the last gate and the finish line) and where the momentum carries the competitor through the finish. Assisted momentum e.g. crawling, rolling, walking, running may result in disqualification. For safety reasons, competitors must clear the finish area as soon as they have completed their run.

### RE-RUNS

A provisional re-run will normally be awarded to competitors who are obstructed (e.g. by another competitor, official, broken pole, equipment etc). The procedure to be followed is:

- 1 Leave the course immediately
- 2 Ski down the side of the course and NOT through the finish
- 3 Report to a Race Official and request a re-run
- 4 If granted, report immediately to the Start Referee

IF A COMPETITOR IS OBSTRUCTED BUT CONTINUES WITH THE RUN, A RE-RUN WILL NOT BE GIVEN AS THE COMPETITOR IS DEEMED TO HAVE ACCEPTED THE OBSTRUCTION

On completion of the run the Race Officials will decide whether the re-run was valid or not.



### THE RESULTS

The provisional results are published on completion of each run and posted at the finish. Competitors have 15 mins to appeal and, although this would normally be accompanied by a fee, this will be waived for the Independent Schools Championships. Also for these Championships only, competitors abandoning the course or suffering disqualification on the first run, will be allowed to race in the second run for experience (but the time will not count). Competitors must at all times obey the orders of the Race Officials whose primary concern and responsibility is for the safety of all participants.

The Race Officials will at all times give the benefit of the doubt to racers when deciding penalties as described above.

---

# FAQS & BOOKING CONDITIONS

---

## BOOKING

Each school is expected to fill 8 places minimum, however the more you can bring the better! If you are not able to get 8 then please let us know, and will do our best to accommodate your team.

There are no specific requirements for the amount of snowboarders and skiers, or number of girls/boys though we would like to place emphasis on the ISSSC being co-ed. If you believe it is going to be difficult to fill spaces then we will aim to combine your school with another if appropriate, or do our best to accommodate you regardless if this applies to your school, please discuss this with Linley Lewis as soon as possible.

## DEPOSITS AND SCHEDULES

All deposits are strictly non refundable. Please make this clear to all party members. After receipt of first deposits of £265 per person, we ask for second deposits of £350 per person four weeks later. The final balance of the trip is due at least 12 weeks prior to departure. We ask that these schedules are strictly adhered to. Basecamp reserves the right to pass on to the client additional costs incurred through late receipt of deposits. We accept payment via bank transfer, or cheque payment. Please make all cheques payable to "Basecamp". Basecamp also requests you send one cheque from the school and not multiple cheques from parents.



---

## ACCOMMODATION

We aim to provide high standards of food and accommodation for all our school groups. All rooms for students are en-suite and multibedded. We will aim to provide twin rooms for staff places at no additional cost; however, this is subject to availability and gender breakdown of the staff. Single rooms are charged at a supplement on request and are subject to availability. The standard of accommodation does vary from hotel to hotel, our minimum standard is 2\*.

## FREE STAFF PLACES

We are providing a 1:8 free place ratio for your tour, which includes shared accommodation for the teachers. Free places are based on group numbers divisible by the ratio, e.g. 8 or 10 paying passengers. Should your group size decrease through any cause we reserve the right to limit the free places in accordance with that group size. We will aim to help our clients in any way to retain group numbers and staff places. Pro rata rates can be supplied for free places if required.





### **PUPIL AND TEACHER INFORMATION**

We require a full list all group names, skiing experience and passport details up to a minimum of 1 month prior to departure. You will be sent the necessary spreadsheet to complete the sooner you are able to get this to us the better.

### **ADMINISTRATION FEES**

All changes to dates and party names after payment of first deposits will be met with a £20 administration fee. Late additions to the party will also incur a supplement at the discretion of Basecamp.

### **FLIGHTS**

Basecamp will endeavour to provide the best flight routes and times for your trip, however, all flight times and routes are subject to availability and cannot be guaranteed. Flight details will be provided as soon as possible, and will usually be released in October when we have all the school applications confirmed. Information will be passed to clients as soon as possible. Low fares airlines booking procedures often stipulate charges for passenger name changes and additional administration. Basecamp reserves the right to pass on extra charges in accordance with those stipulated by the airlines in the event that they are incurred as a result of the client's actions.

### **PRICE GUARANTEE**

All prices are fully guaranteed against fuel surcharges and taxes if booking procedures are adhered to. In the event that the booking procedures are not adhered to, Basecamp reserves the right to re-cost the trip if necessary. At Basecamp we understand the complications and difficulties of running a school trip. We aim to provide you with a service that makes running the trip as easy as possible. In order to do this, it is essential for you - the party leader - to provide us with as much information as possible as well as keeping in constant communication throughout the booking. We also require notice of any changes you wish to make to the booking as soon as possible. Please note; some changes may be deemed too close to the departure date and therefore may not be possible.



---

### **DO BASECAMP HAVE ANY RISK ASSESSMENTS AVAILABLE FOR THE SCHOOLS?**

*On request Basecamp will provide a Risk Assessment for: Travel and other off-mountain activities, Accommodation, Ski Races, and will also provide a copy of our Safety Management System, which covers our operating procedure.*

### **PHOTOS**

*The photos of the event will be available for purchase, and whilst we do our utmost to get a photo of each skier we cannot guarantee that each individual racer will receive their own photo.*

### **WILL BASECAMP SUPPLY THE NAME OF THE VARIOUS OPERATORS AND EMERGENCY CONTACT NUMBERS?**

*The hotel numbers and the transport company details will be handed out on the risk assessments.*

### **IS THE HOTEL SECURED AT NIGHT AND ARE THERE STAFF ON DUTY ALL NIGHT? HOW FAR WILL THE STAFF INVOLVED BE SLEEPING FROM THE PUPILS?**

*All external doors are locked at night, and there is at least 1 member of staff on each floor with the pupils.*

### **WILL WE RECEIVE A DETAILED ITINERARY THAT I CAN HAVE?**

*These will be released with the booking schedule.*



---

# SUPPORT

---

*Please contact us in the office at any time from 9am to 6pm Monday to Friday. We will be happy to help should you have any queries or questions in regards to the trip or booking process.*



0208 789 9055



hello@schoolskichampionships.com



schoolskichampionships.com



facebook.com/schoolsskichamps



---

# SPONSORS

---

*We are very thankful to have a range of sponsors for this event:*

**ARMADN**

**PLANKS II**

*mpi*  
brokers

If you would like a copy of our media pack contact: [hello@schoolskichampionships.com](mailto:hello@schoolskichampionships.com) or call +44 (0) 208 789 9055.